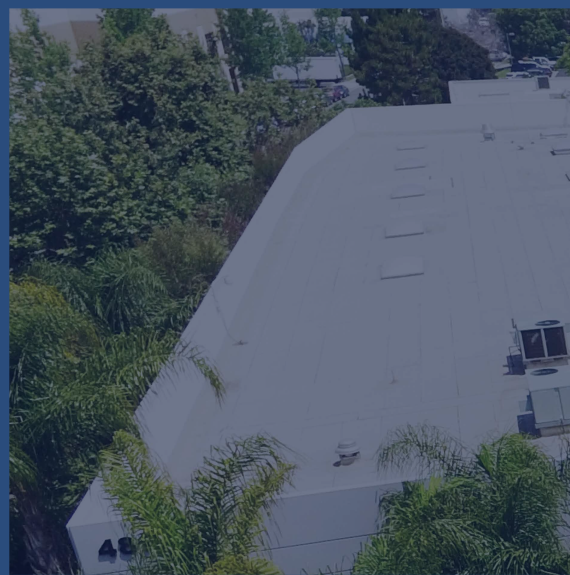




Since 1982, Orange County Industrial Plastics has grown to become the recognized leader in the plastic distribution, plastic fabrication, and POP display industry. Specializing in turnkey solutions, we design, engineer and manufacture a wide variety of quality displays and components, with different applications, for multiple demographics. Our expertise and our inventory mean we're always ready to ASSIST you.

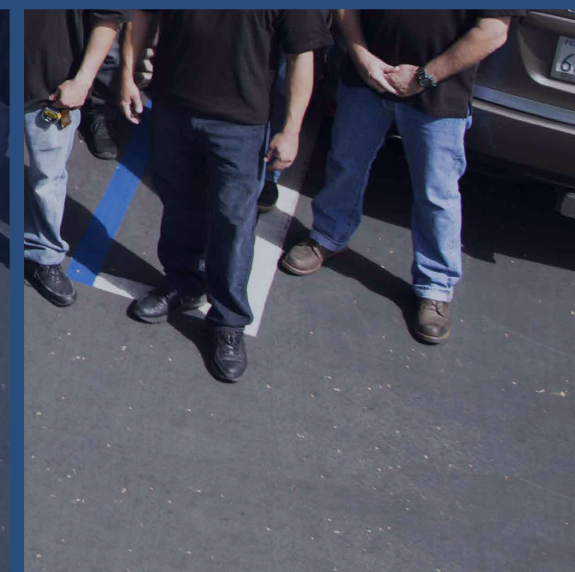
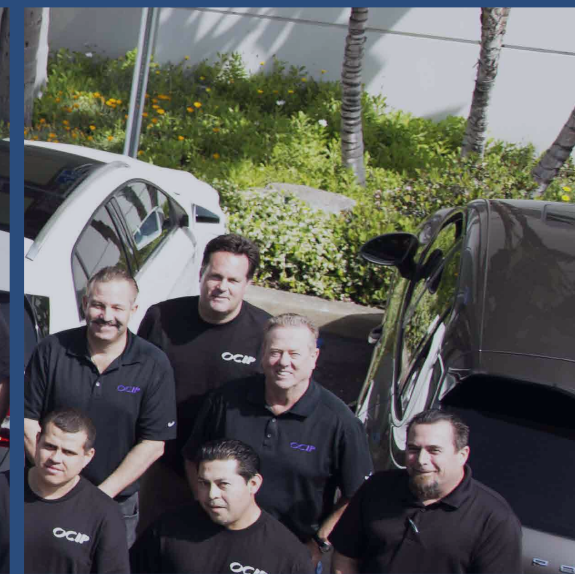


OUR FACILITY

OCIP has grown to become the recognized leader in the plastic distribution and fabrication industry. Specializing in turnkey solutions, we design, engineer and manufacture a wide variety of quality components covering large industrial demographics.

With a strong emphasis on quality customer relationships and superior products and services, we are able to complete any conceivable project, efficiently and cost effectively at our 80,000+ square foot Anaheim headquarters.





OUR TEAM

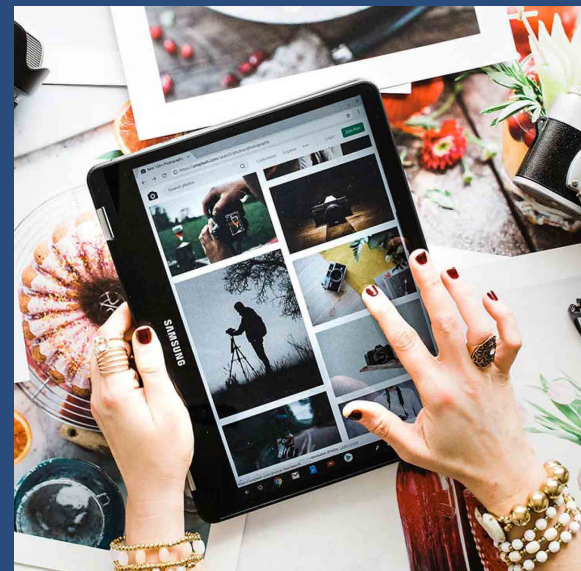
Whether your business is in need of a high volume rollout or the development of a prototype, we work closely and collaboratively with every client to properly assess project objectives and goals, insuring a successful job from concept to completion, every time. OCIP is dedicated to plastic industry innovations and solutions, technical excellence and on time delivery, ensuring total customer satisfaction through continual process improvement.

OUR PROCESS

we stick to three simple steps: imagine, create, deliver.
Here at ocip, we produce custom pop displays and other products that suites your unique brand.

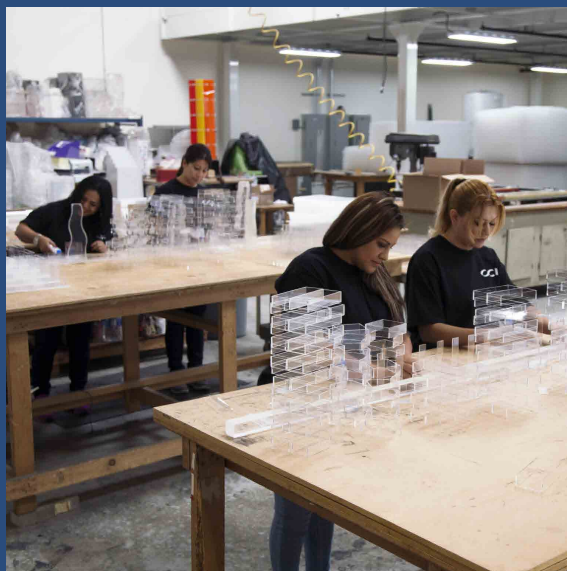
1 DESIGN

Our in house designers works with each company to establish a design that is suited for their brand. Whether it is a start up or a company that has been around for years, we are here to collaborate and design something that is right for you.



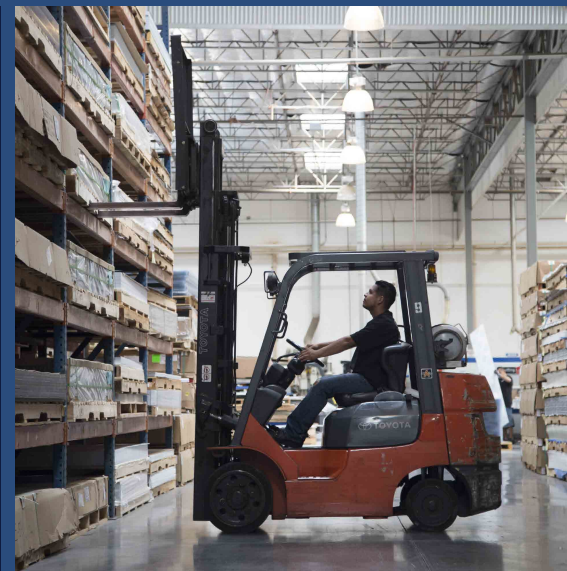
2 FABRICATE

Our team of expert fabricators bring your ideas to reality. Some of our services include edge finishing, line bending, heat forming, flame polishing, and gluing.



3 FULFILLMENT

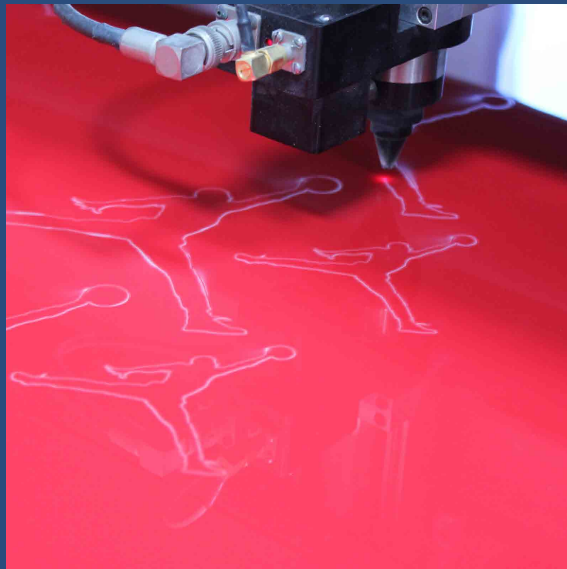
At our 80,000 square foot facility, we handle your project from manufacturing to packaging. We ensure your product is safely packaged so that it can be shipped anywhere in the world.





OUR EQUIPMENT

We invest in our tools so we can provide a product with the highest quality. Here at ocip, we have several industrial machines that makes all of this possible.



LASER

We have 6 laser cutters engravers. Our largest laser can cut or engrave sheets up to 5' by 10'. The lasers range from 250 Watts to 400 watt.



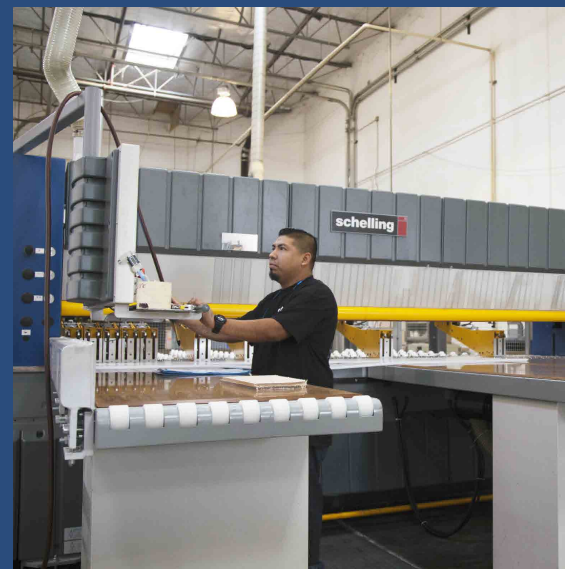
UV PRINTER

OCIP has 2 large format flatbed UV digital printers. We have the ability to print onto rigid media up to 98" wide x 120" long and up to 2" thick.



CNC

OCIP has seven 3-axis CNC routers. All of our routers feature multiple spindles for high production volume



SAW

OCIP has 2 Schelling high precision CNC cut-to-size panel saws. With the ability to cut sheets over 10 feet and 4 inches thick.

CUSTOM AND ECO FRIENDLY SUSTAINABLE MATERIALS

OCIP is one of the largest distributors of plastic sheet, rod and tube in the United States. We have more brands, sizes and colors than most competitors. We have various types of plastic sheets in stock that can be cut to any size or specification. Along with our other service areas, we offer custom cutting services and quick turnaround times – often within 24-48 hours.

ABS

ACRYLIC/PLEXIGLASS SHEETS

HIGH IMPACT STYRENE

NYLON

PETG COPOLYESTER

POLYPROPYLENE

PHENOLIC

POLYCARBONATE

POLYETHYLENE

EXPANDED PVC

PVC

CPVC

ACRYLITE®

ACRYLITE® SATINICE CRYSTAL SURFACE

ACRYLITE® Satinice crystal surface acrylic has a substantially textured, frosted surface that diffuses light to enhance your design options and backlit applications. Its cool frosted surface resists fingerprints and is easy to clean.

FEATURES & BENEFITS

ACRYLITE® Satinice crystal surface acrylic sheet's cool frosted surface softens and diffuses light, while maintaining a crystal clear edge. Its appearance is reminiscent of etched glass and is available with a frosted surface on one or two sides.

ACRYLITE® SATINICE VELVET TEXTURE DP9

ACRYLITE® Satinice velvet texture extruded DP9 is the same premium grade sheet but with the velvety smooth surface on both sides for a finished look from any viewing angle. With its extremely smooth frosted texture, it just begs to be touched. When backlit, the two-sided frosted product diffuses the light producing a glowing effect to enhance any design application.

FEATURES & BENEFITS

With its unique light diffusing surface, the options for using these velvety materials are almost endless: retail displays, furniture, interior designs, privacy panels and all other applications where an elegant but trendy look is desired.



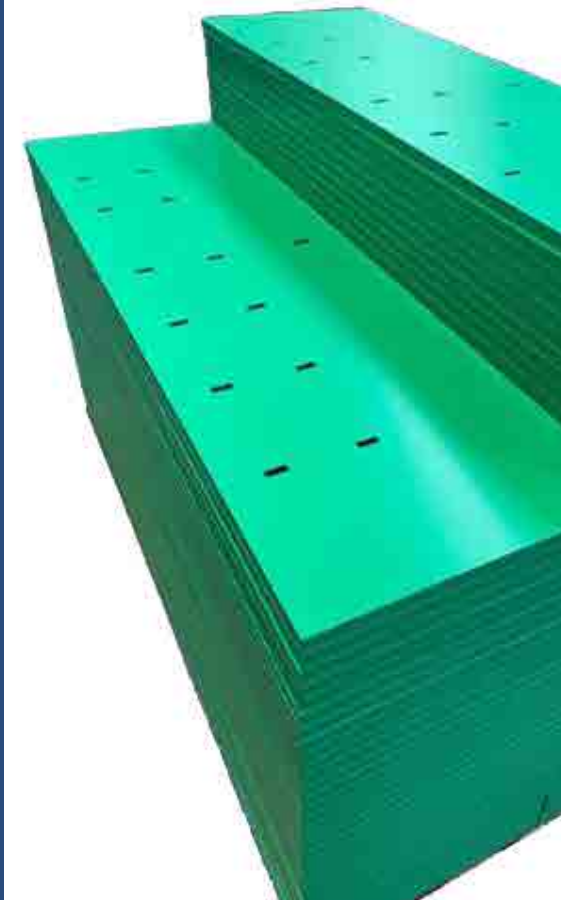


VYCOM'S CELTEC® EXPANDED PVC

VYCOM'S CELTEC® Expanded PVC family of graphic and display materials, pvc foam boards and expanded pvc sheets offers the print and design communities a broad range of colors and sizes, providing the flexibility to achieve the desired look. Eye-popping colored pvc sheets make images come to life while product formulation provides consistency in aesthetics and workability for the most demanding applications including signage, exhibits, point of purchase displays and more.

FEATURES & BENEFITS

- Printable for both digital & screen
- Lightweight
- Easy to Fabricate, Paint or Laminate
- Excellent Fastening Characteristics
- Superior FR Properties
- Satin Smooth Finish





CHEMCAST ECO-GREEN 100% RECYCLED ACRYLIC SHEET

Chemcast® EcoGreen, is the trademark for our environmentally friendly cell cast acrylic sheet produced 100% with recycled monomer methyl methacrylate (R-MMA). Nowadays our responsibility with the planet is to create a sustainable future which is a major goal for all us and for all the members in our green supply chain.



OCIP is the master distributor for Chemcast® and share their sentiment in the innovation, sourcing, and offering of alternative and sustainable options to our ever-growing and evolving list of substrate offerings to our clients.



HARVEST
EcoGreen Chemcast



PROCESS
EcoGreen Chemcast



RESULT
EcoGreen Plastiglas



THE GILMAN BROTHERS COMPANY PRODUCTS

OCIP is the authorized distributor for The Gilman Brothers. A Proudly Family Owned and Operated Company for 125 years.

PRODUCTS:

- RESILIENT® Soft Touch Graphics Board (Patent Pending)
- INFINITY® Styrene Faced Foamboard
- EAGLECELL™ All-Paper Honeycomb Graphics Board
- MOUNTCOR® 130°F Permanent HA Foamboard
- RYNO BOARD® High-Density Clay-Coated Foamboard
- INSITE® Foamboard
- LITEPRINT™ FR ~ Flame Retardant Foamboard
- GILCO® Styrene Digital-Grade 100% Styrene Sheets



HIGH IMPACT POLYSTYRENE (HIPS)

HIPS is a versatile, cost effective extruded polystyrene that can be used in a variety of applications. HIPS can be printed Offset Lithography, Screen, UV Digital and Flexography. It can also be heat bent, die cut, punched, thermoformed and guillotine cut. It has excellent dimensional stability and provides good toughness, stiffness and impact strength. It is also 100% reoyolable*.

*Based on recyclable municipality



KÖMATEX

KOMATEX BY KOMMERLING

- Uniformly and finely structured surface
- Fine-celled foam structure
- Good surface strength
- Excellent printing qualities
- Good for laminating
- Very good for bonding
- Ideal for punching work
- Simple processing
- Lightweight
- Flame resistant
- Thermoformable
- Chemical and corrosion resistant
- Low water absorption
- Low thermal conductivity
- 100 % recyclable



OCIP





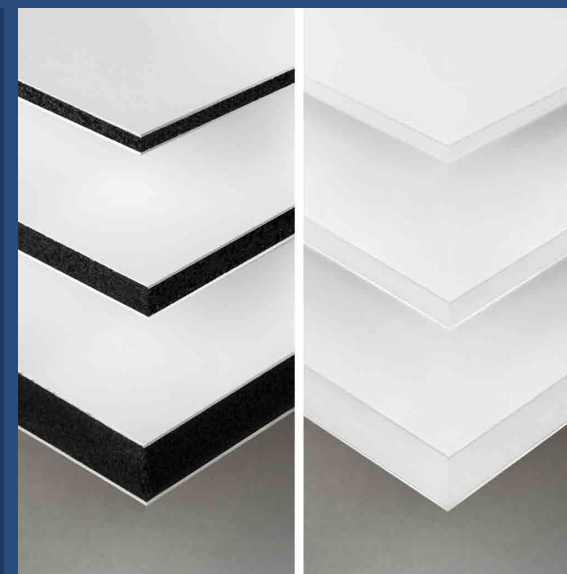
PALBOARD MULTILAYERED PVC SHEET

MAIN BENEFITS

- Easy to fabricate, heat-bend, and cold-bend using v-groove routing
- Ultra-smooth and uniform surface that resists dents and scratches
- EverClean™ protective film is standard
- Excellent ink adhesion and white index for vibrant color reproduction
- HYG version is printable while maintaining antimicrobial properties
- Recycled lightweight foam PVC core
- High structural strength with a relatively low weight
- Excellent chemical and fire resistance
- Strong electrical and thermal insulation
- A true co-extruded sheet, not a laminate
- Phthalate-free, REACH & RoHS compliant
- 10 year delamination warranty
- 3 year non-yellowing warranty (all white only)

TYPICAL APPLICATIONS

- Digital and screen printing
- POP and retail displays & signage
- Exhibits and kiosks
- Routed and relief lettering
- Industrial and construction signs
- Fabricated and structural parts
- Organizational Storage



CHEMCAST®
The all purpose cell-cast acrylic sheet



OPTI-K

OPTI-K is a new technological platform recently launched that includes three product brands to meet the needs of advertising, signage and commercial lighting systems with LEDs or neon in channel letters.



BLACK AND LED

BLACK AND LED: Acrylic sheet with black hue that when illuminated by LED takes the color of the light emitting source. Enables any imaginable application.

CELLCAST ACRYLIC SHEET



PLASKOLITE

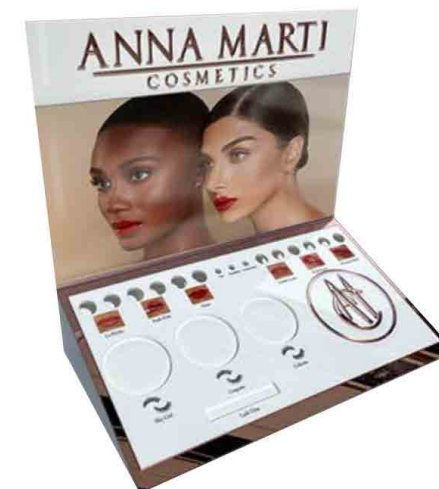
FABBACK

PLASKOLITE FABBACK ACRYLIC MIRROR

FABBACK color acrylic mirror sheet is made from OPTIX continuously processed acrylic sheet. Using vacuum metalizing, each sheet is given a mirror finish that is protected by the industry's toughest, most durable backing. An overage of 1" is provided on standard sheet sizes for maximum yield when laser cutting, and all mirror acrylic colored sheet is covered by a 3-mil laser cuttable film. 19 stocked colors with custom colors and sizes available.

FEATURES:

- Sheet Size: 48" x 96" Run-to-Size Capabilities
- Thickness: 0.060" - 0.236"
- Width: 5" - 80"
- Length: 10" - 120"
- Opaque
- Indoor



OCIP

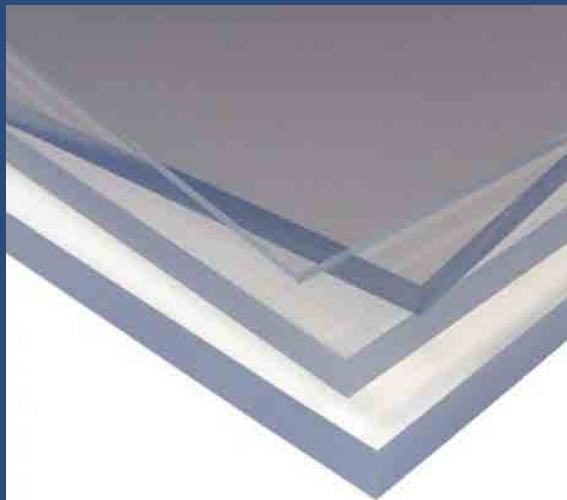
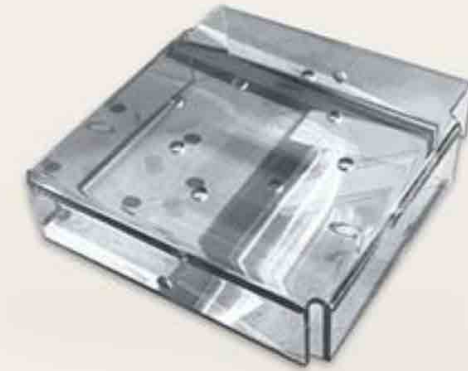
POLYCARBONATE

POLYCARBONATE SHEET

POLYCARBONATE is a naturally transparent amorphous thermoplastic that can be used to produce a variety of precision machined parts and products, but it's also frequently used as a replacement for acrylic, glass, and polyethylene. Polycarbonate sheets offer a wide variety of characteristics and features that are well-suited to numerous applications and industries, including agricultural, automotive, construction, electrical, medical, and security, to name a few. In terms of impact strength, you can't go wrong with choosing a polycarbonate sheet. This general-purpose thermoplastic is approximately 250 times stronger than glass and 30 times stronger than acrylic.

FEATURES AND BENEFITS:

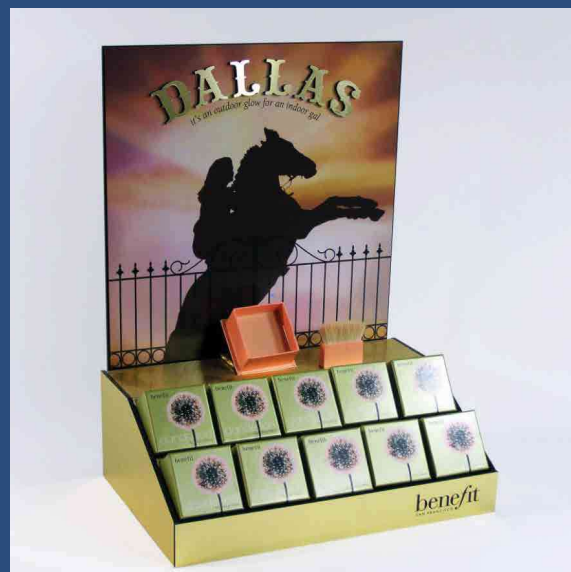
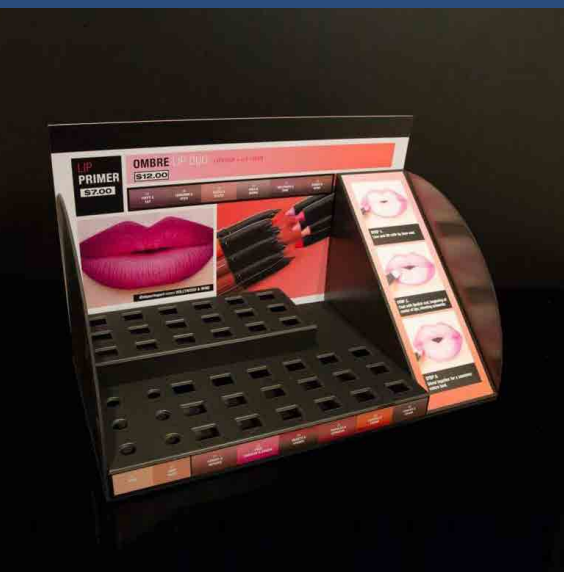
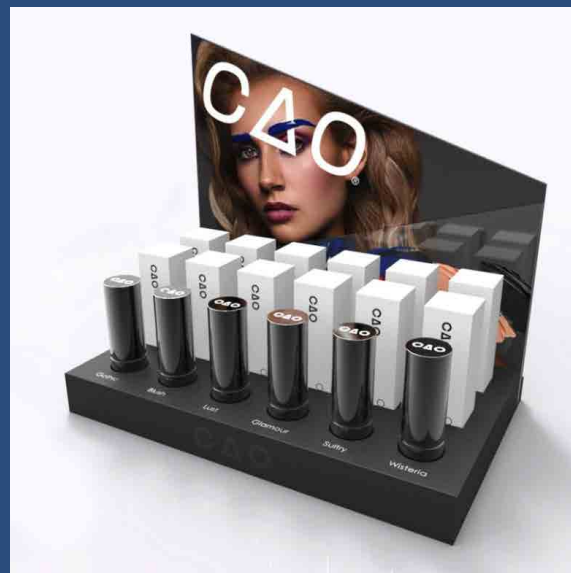
- Virtually unbreakable
- High impact resistance
- High clarity and light transmission
- High flame resistance
- Half the weight of glass
- Easy to machine, handle, and install

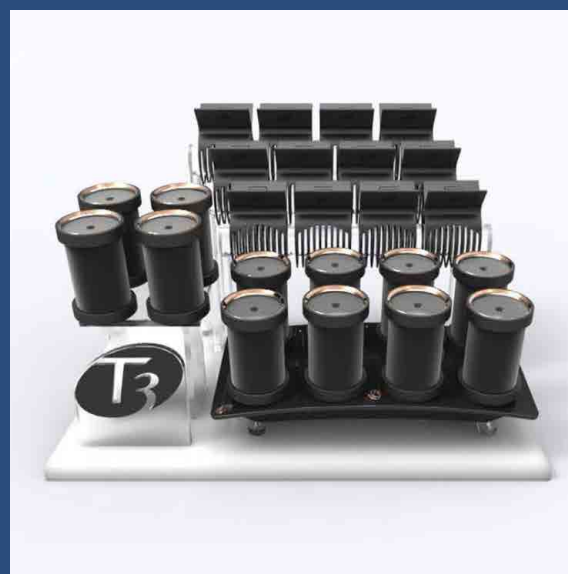
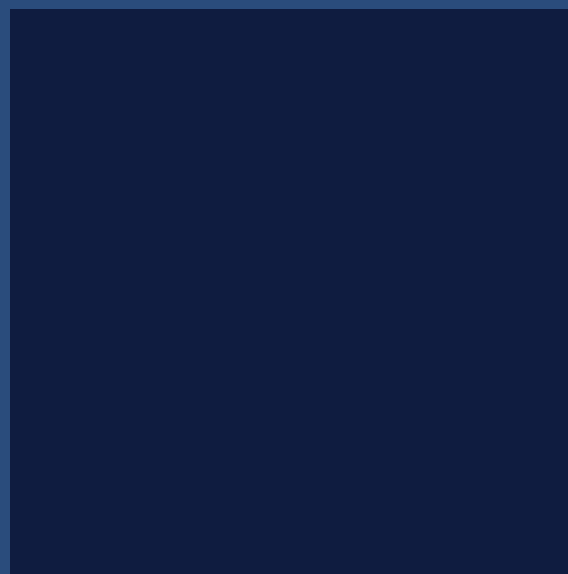




OUR WORKS











To Learn More
Please Go To
OCIP.COM

THANK YOU

RIK PORTS
rik@ocip.com
949-331-8795



A handwritten signature in white ink, located in the bottom right corner of the slide.